

T10/T20

Counting scale

Weight control scale, It includes precise, steady and flexible technology, thought to improve the productive and commercial processes. Touch screen with software designed for the control of weight. It is also easy to use thanks to a big multifunctional screen with integrated traffic lights and indicator bar.



T20



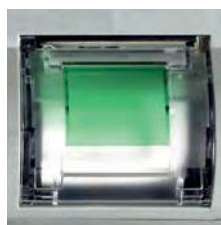
T10



Touch screen



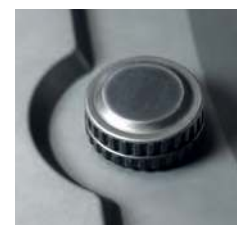
RS232 output and USB



*Printer



Bubble level



Adjustable feet

FEATURES MODELS T10/T20:

- TFT touch screen with 7" (resolution 800x480).
- Stainless steel plate and ABS housing.
- Units: kg, g, lb.
- Internal rechargeable battery 6V/4Ah. It lasts 30 hours at intensive use.
- Power supply with adaptor AC/DC 100-240Vac 50/60Hz.
- Temperature of use: -10°C +40°C.
- RS232 output, data format for PC and printer.
- 2 USB port.
- 256 Mb of memory and 128 Mb RAM.
- External calibration.
- It is available in models of high resolution (T10C from 60.000 divisions).
- T20 model with printer included.
- Multifunctional screen with target.
- Emulation of traffic lights at complete screen.
- Indicator bar with graphic screen. If it has an established target it will indicate the percentage with accumulation of weights to achieve the selected target.
- Limits with configurable acoustic signal.
- More than 5000 PLU's in memory with alphabetic searcher.
- More than 1000 possible users. It includes different levels of roles and users.
- Export of files to PC in excel format (*.CSV) with no necessity of additional software, through USB key.
- Labels and tickets with eligible formats (optional printer).
- Double range.



7"
Big touch screen

FUNCTIONS:

- Target function/target weight
- Accumulation: manual, during the load and the unload process
- Limits with acoustic signal and configurable viewing
- Gross/Net
- Zero



Dimensions (mm)

Code #	260550	260553	260556	260549	260552	260555	260558	260560	260562
Capacity (kg)	6	15	30	6	15	30	6	15	30
Readout (g)	0,1	0,2	0,5	0,2	0,5	1	0,2	0,5	1
n divisions	60.000	75.000	60.000	30.000	30.000	30.000	30.000	30.000	30.000
Readout (g) verification				2	5	10	2	5	10
Divisions CE-M				3.000	3.000	3.000	3.000	3.000	3.000
Pan dimensions (mm)	300x230	300x230	300x230	300x230	300x230	300x230	370x240	370x240	370x240
Packing dimensions (mm)	480x365x210	480x365x210	480x365x210	480x365x210	480x365x210	480x365x210	475x435x210	475x435x210	475x435x210
Packing weight (kg)	5,5	5,5	5,5	5,5	5,5	5,5	7,5	7,5	7,5
Printer included							•	•	•

Certifications	
ENAC	Code # 900001

Accessories	
Code #	Accessories description
910034	IMP27 printer
910035	IMP28 printer
910036	IMP37 Label machine (continue)
910049	Bar code scanner